



iData J7 Series Universal scanner

Stylish appearance, efficient scanning, stable and easy to use

iData J7 series is an universal scanner with iData's unique stylish appearance. It has corded or cordless modes to flexibly meet the needs of different work sites. It adopts 0.3 MP global exposure scanning, which is more stable and efficient when scanning fast-moving barcodes. It can be widely used in retail stores, logistics warehouses, express sorting, medical hospitals, government and enterprise units, etc., which can maximize the performance of the scanner.

Stylish appearance design, enhanced working experience

The whole machine adopts a fashionable appearance design, which can better integrate into your store or other working scenes; the streamlined housing design and excellent scanning trigger key design will have workers enjoy a more comfortable operational gripping.

Scanning configuration suitable for the scene to improve workers' working efficiency

The moderate scanning distance allows workers to quickly scan barcodes/QR codes without almost any adjustment; 0.3 MP global exposure scanning allows workers to stably and efficiently scan fast-moving barcodes, optimize the working experience, and improve working efficiency.

Flexible connection methods to meet the needs of different working scenarios

You can choose corded and cordless connection methods. corded can use USB or serial port connection; cordless can choose cordless base or cordless receiver to achieve scanner connection. The cordless base can provide charging function for the scanner, while the cordless receiver can realize more convenient and quick access to terminal devices. It has two communication methods: 2.4G and Bluetooth 5.1. Users can choose the connection method and communication method flexibly according to the business scenario to maximize the usage value of the scanner.



J7 cordless version
with base

J7 cordless with USB
dongle

J7 corded
version



Retail store



Express logistics



Drugs traceability



Public utilities

J7 Series Technical Specifications

Performance Parameters

Image sensor	640*480 pixels
Light source	WHITE

Physical Parameters

Size (H*W*D)	corded scanner:89.6mm*62.5mm*156.6mm cordless scanner: 89.6mm*62.5mm*156.6mm cordless base: 164.7mm*71.3mm*52.6mm
Weight	corded scanner: 132g cordless scanner: 183g cordless base: 316g
Working voltage	5V (DC)
Current	350mA(working current), 102mA(standby current)
Interface	USB-HID, USB-CDC, RS232
Prompt	Buzzer prompt/LED prompt
Housing material	PC+ABS

Code System

1D	Code 39、Code 32、Interleaved 2 of 5、Standard 2 of 5、Industrial 2 of 5、Matrix 2 of 5、Code 93、Code 11、Code128、UPC-A、UPC-E、EAN/JAN-8、EAN/JAN-13、Plessey、MSI、GS1 DataBar(RSS14)、GS1 DataBar limited、GS1 DataBar Expanded
2D	PDF 417、Micro PDF 417、QR Code、Micro QR、Data Matrix、Maxi Code、Aztec Code、Han xin Code

Decoding Range

Barcode	Decoding range
code 39 4mil	5.0cm~16.0cm
code 39 8mil	4.0cm~26.0cm
code 39 13mil	5.0cm~41.0cm
code 39 20mil	9.0cm~55.0cm
EAN 13 4mil	4.0cm~14.0cm
EAN 13 8mil	5.0cm~26.0cm
EAN 13 13mil	8.0cm~41.0cm
EAN 13 20mil	8.0cm~55.0cm
code 128 4mil	4.0cm~17.0cm
code 128 8mil	4.0cm~26.0cm
code 128 13mil	4.0cm~43.0cm
code 128 20mil	7.0cm~55.0cm
QR 6mil	5.0cm~6.0cm
QR 15mil	5.0cm~20.0cm
QR 20mil	4.0cm~25.0cm
QR 45mil	5.0cm~55.0cm
Mobile payment 1D barcode	8.0cm~40.0cm
Mobile payment 2D barcode	5.0cm~60.0cm

Scanning Performance

Reading accuracy	≥3mil
Scanning angle	(pitch): ±50°; (skew): ±70°; (tilt): 360°
View angle	Horizontal: 40°, Vertical: 30°, Diagonal: 50°
Minimum reading contrast	20%
Motion tolerance	0.8m/s

Environmental Parameters

Working temperature	-10°C~50°C
Storage temperature	-20°C~60°C
Humidity	5%~95%(no condensation)
IP rating	IP54
Drop specification	multiple drops to the concrete floor at the height of 1.5m
Ambient light	0Lux~100000Lux
ESD protection	±4KV(air discharge), ±2KV(contact discharge)

Cordless Transmission Performance BT (cordless version only)

Communication mode	Bluetooth 5.1/2.4G
Frequency	2.4GHz
Transmission distance	BT: ≥10m, 2.4G: 75m (open space)
Communication mode	Real-time mode/ batch mode

Scanning Configuration (cordless version only)

Battery capacity	2600mAh
Charging time	≤5.5 Hour (5V/2A)
Working time	≥24h (Scan interval 5s/time)

Corresponding Regulations

Electric safety	IEC 62368
Environmental specification	RoHS directive 2011/65/EU, GB/T 26572
LED safety	IEC 62471:2006
EMI/RFI	FCC Part 15 Class B, EN 55032:2015, EN 55035:2017

Accessories

Standard accessories	cordless version: Data cable*1, user manual*1, cordless receiver*1 corded version: Data cable*1, user manual*1
Optional accessories	cordless version: cordless base corded version: serial cable

The information of iData products and software service may be subject to change without notice. Please contact your iData sales representative for the latest details.



Official Website

WUXI IDATA TECHNOLOGY CO., LTD.

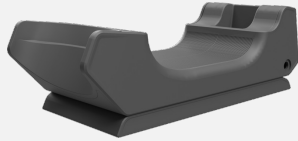
Address: Floor 11, Building B1, Wuxi (Binhu) National Sensing Information Center,
No.999 Gaolang East Road, Wuxi City, Jiangsu Province, P.R.C.

E-mail: sales@idataglobal.com

Website: www.idataglobal.com

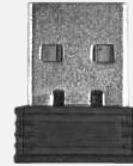
J7 Series Accessories

Cordless base



CHA-EXTD-J7(301010213)

Dongle



TRF-DGL-J7(301160002)

Serial cable RS232



CHA-RS232-GNR(301030102)

Data cable USB



CHA-USBC-GNR(301030125)

Fixed cradle



MNT-MC-GNR(301020025)

The information of iData products and software service may be subject to change without notice. Please contact your iData sales representative for the latest details.



Official Website

WUXI IDATA TECHNOLOGY CO., LTD.

Address: Floor 11, Building B1, Wuxi (Binhu) National Sensing Information Center,

No.999 Gaolang East Road, Wuxi City, Jiangsu Province, P.R.C.

E-mail: sales@idataglobal.com

Website: www.idataglobal.com